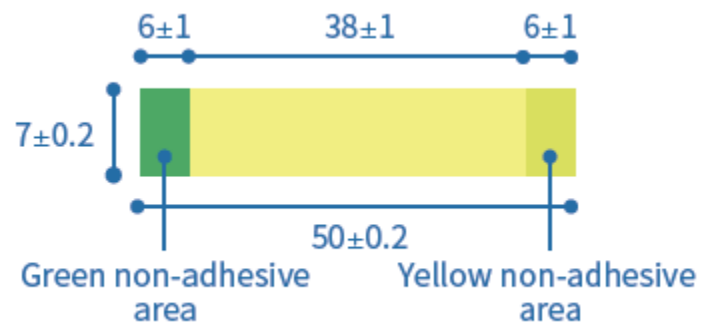
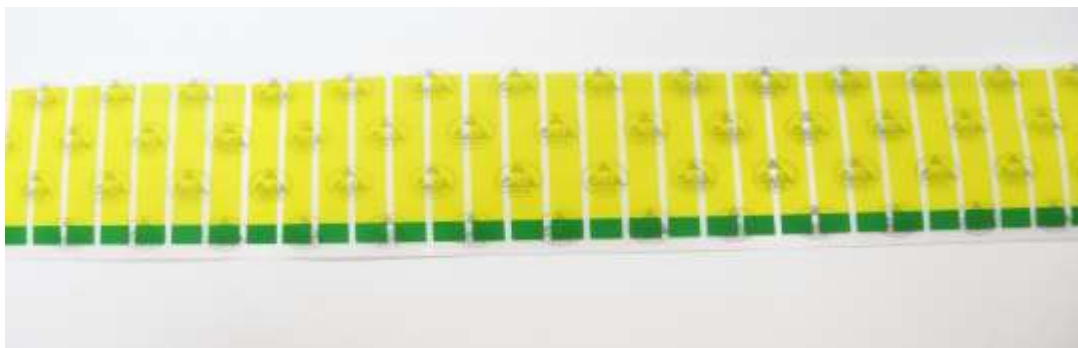


TECHNICAL DATA SHEET ESD End Sealer Splice Tape



The Label is made of 3 Parts (Yellow Adhesive Tape + Yellow Non Adhesive Tape + Green Non Adhesive Tape) it is used for Fixing and sealing the end of SMT Carrier Tape Reels and other materials Reels.

Size: 50mm x 7mm , 3000pcs per Roll , Core ID: 38mm , Antistatic both sides of label



CPPS PARTTECH

FEATURES:

ESD with no damage to components

Two ends with no adhesive – easy to Peel or Pull

The Green Non Adhesive area is clearly marked to peel off the label from reels
In the correct direction.

How to use:

For Sticking: Hold the yellow Non adhesive area, stick half part of label on the
End of the carrier tape , then fix on the whole reel.

Peeling: Peel off the label at the Green Transparent non adhesive area from the
Reel.

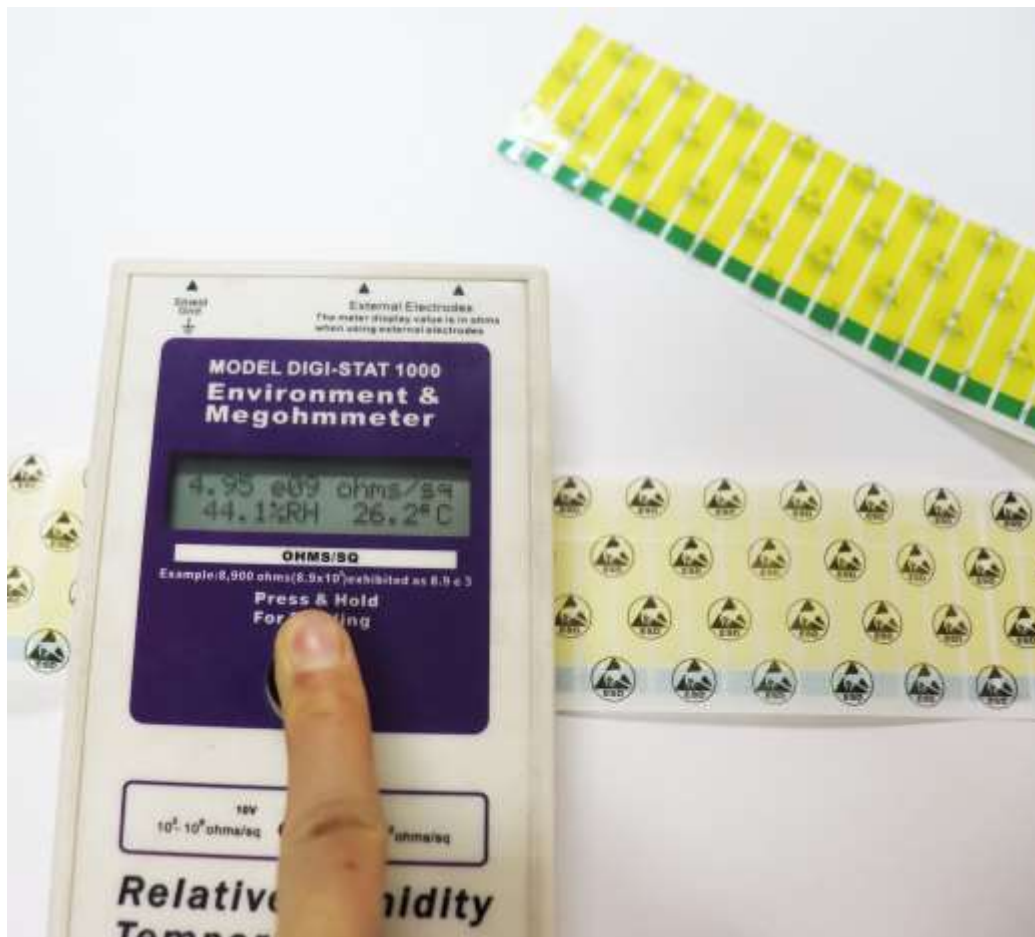


CPS PARTTECH

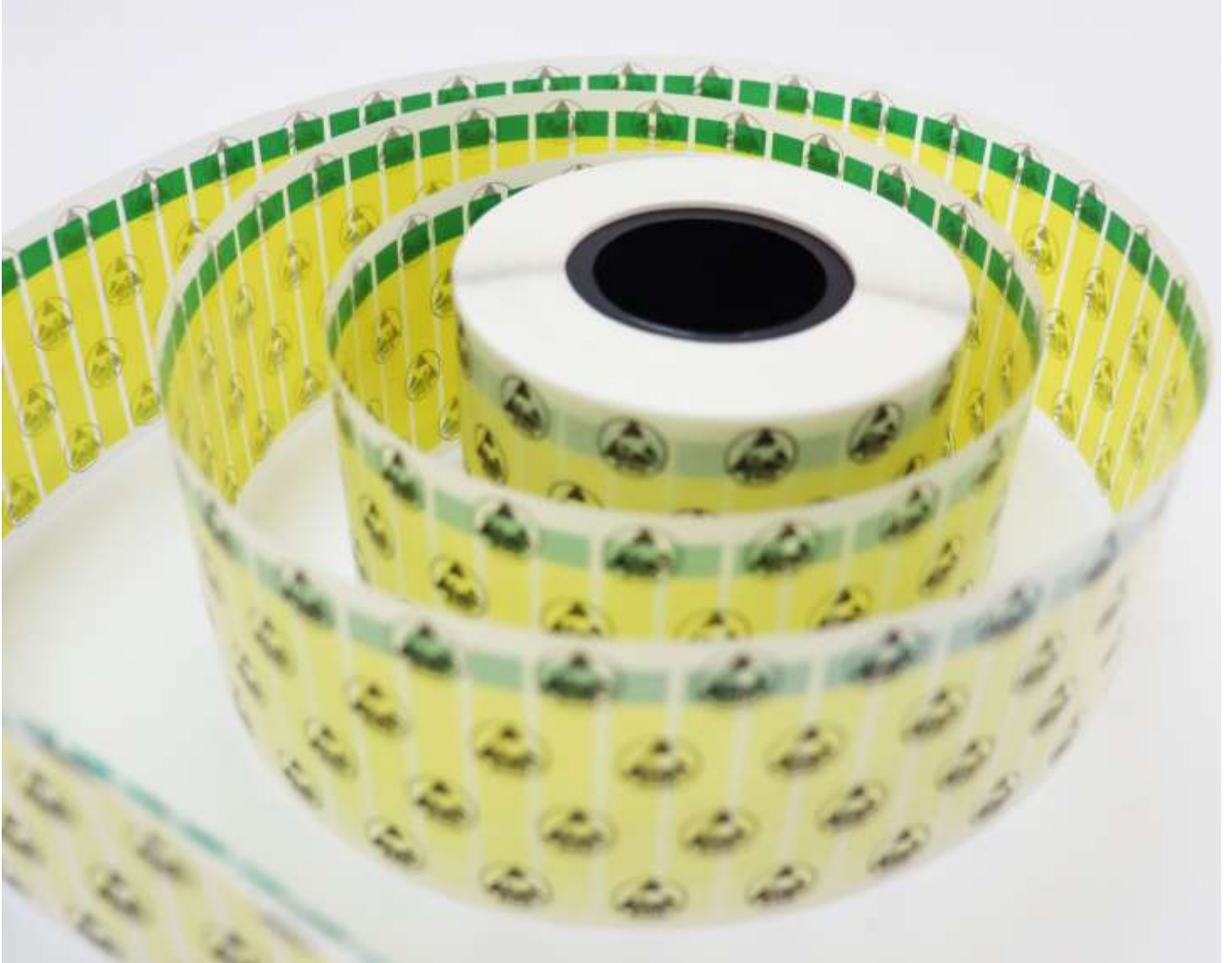
Applications:

Used for sealing the New Carrier Tape reel

Used for fixing the end of SMT Carrier Tape reel to avoid losing when storing .



CP S **PARTTECH**



CPPS PARTTECH

