

FUJI

FUJI

SOFTWARE

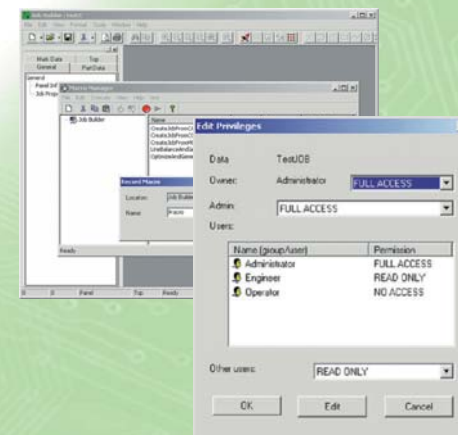
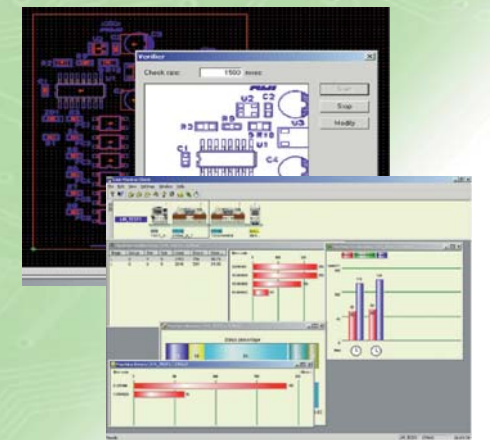
Fuji Flexa

FLEXIBLE ASSEMBLY SOFTWARE

Fuji Flexa represents the latest in SMT line management, offering a flexible solution which integrates seamlessly with your production environment and boosts productivity with wizard and macro-based automation.

Features include:

- * Seamless Integration with Other Host Systems
- * Customizable XML Report Format
- * Flexible Board Layout Support
- * Automated Data Creation
- * Powerful Security Features
- * Offline Production Verification
- * Flexible Database Sharing
- * Real Time Factory Monitoring
- * Internet/Intranet Production Reports



* Microsoft Internet Explorer is a registered trademark, in the United States and other countries, of Microsoft Corporation.

Cat. No. FLEXA/07-Mar/E

FUJI Machine Mfg. Co., Ltd.

19 Chausuyama Yamamachi
Chiryu-shi, Aichi-ken 472-8686 Japan
Tel: +81-566-81-2110
Fax: +81-566-83-1140

www.fuji.co.jp

The contents of this catalog are subject to change without prior notice.
The information in this catalog is current as of March, 2007.

FUJI Machine Mfg. Co., Ltd.

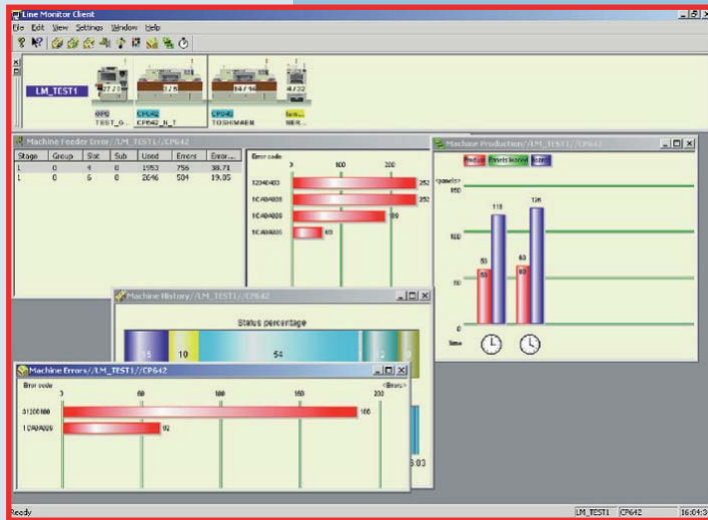
INFORMATIVE & ANALYTICAL

Internet/Intranet Production Reports

Fuji Flexa includes powerful functionality which uses the Internet and/or factory intranet to collect specified data for the generation of production reports. To view these reports, the viewer does not even need to install any special software, as they can be displayed using a standard Internet browser.

Real Time Factory Monitoring

Real time monitoring puts production information at the factory manager's fingertips. Line Monitor can freely display the production status of any line, as well as line overview and detailed device information, in real time on any PC. Using the Multiple Document Interface (MDI), equipment comparison charts can also be produced.



CONFIGURABLE & VERIFIABLE

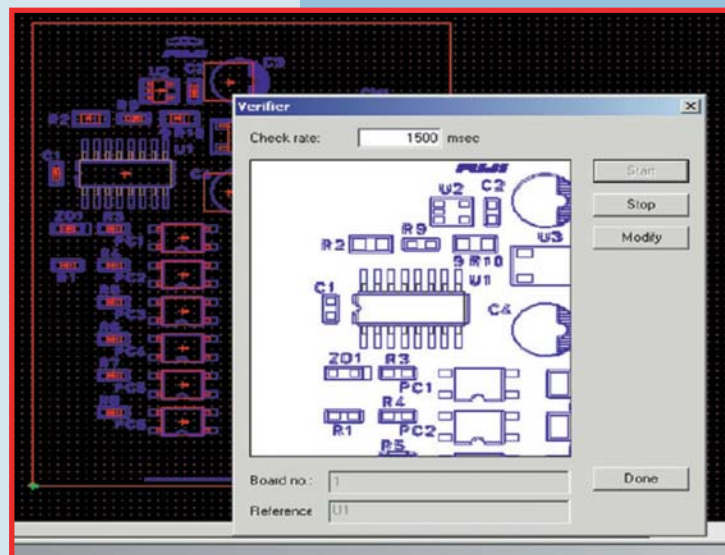
Flexible Database Sharing

Job Server is used to manage Jobs, and Part Data Server is used to manage part data. The data managed by these servers is available throughout the network as shared data, permitting access by any PC on any line. In the case of Job Server, a management server is provided on the Flexa PC in addition

to the shared data server. This permits test data and special Job programming intended for one line only to be managed separately. The server can be freely configured for exclusive use, or for use in tandem with the shared data server, in accordance with the user's needs.

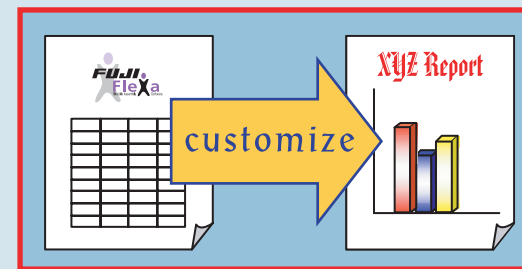
Offline Production Verification

Fuji Flexa improves upon prior Fuji assembly software with the addition of robust verification functionality. Fuji Flexa visually overlays CAD data, Gerber data and Job data to allow confirmation of the integrity of the production program. This allows any discrepancies to be immediately detected and fixed offline.



Seamless Integration with Other Host Systems

Fuji Flexa features an API interface and functions which can be called from other host systems, permitting full, seamless integration of Fuji Flexa functions, both for all-Fuji lines and for mixed vendor lines which contain Fuji equipment.



Customizable XML Report Format

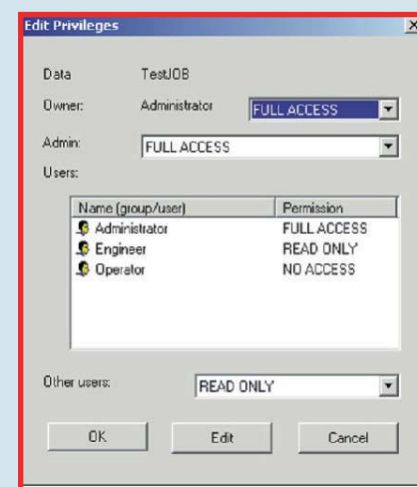
All reports are formatted using Extensible Markup Language (XML), a standard programming format that enjoys widespread acceptance for its high degree of flexibility and customizability. Layouts can be freely created and modified using the Extensible Stylesheet Language (XSL). Fuji Flexa also features a tool to convert XML formatted production data into CSV format for reuse by the system.

Flexible Board Layout Support

Fuji Flexa's all-new board layout function allows multiple sets of existing Job or CAD data (in different formats/from different sources) to be imported into one Job, as well as freely assigned to either the top or bottom surface.

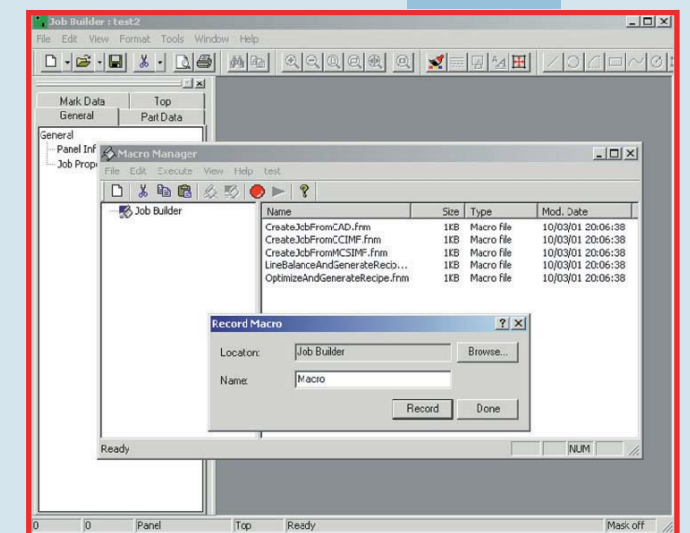
Automated Data Creation

In order to make the Job and part data creation process as easy and error-free as possible, Fuji Flexa is fully equipped with helpful, familiar wizard functionality. Using wizards streamlines the learning curve, allowing users to comfortably come up to speed. To support work in all production and programming environments, Fuji Flexa also offers macro functionality. No special knowledge of scripting is necessary to use the macro functions. All that is needed is for a procedure to be performed once, so that it can be recorded and stored by the system as macro data. This improves productivity by eliminating repetitive processes while reducing the possibility of procedural errors.



Powerful Security Features

Problems such as accidental data overwrites by operators on different shifts, or overwrites of the master data, are averted by Fuji Flexa's security functions, which are used to assign access privileges to all data and folders. More than merely assigning an owner to the data or folder, permissions can be assigned specifically (both to individuals and groups) for read-only access, file editing, file deletion, ownership assignments and assignment/editing of access privileges.



SEAMLESS & CUSTOMIZABLE

SECURE, EASY & FLEXIBLE

Fuji Flexa Features